

# BLAME IT ON THE BOOGIE

JACKSON 5

BASS

♩=112

TRANSCRIPTION BY DAVE MAEDER

## (A) INTRO

Musical notation for the Intro section, measures 1-4. The key signature is two flats (Bb, Eb) and the time signature is 4/4. The notation includes eighth and sixteenth notes, rests, and repeat signs with a '2' above them.

## (B) VERSE

Musical notation for the Verse section, measures 5-11. The key signature is two flats (Bb, Eb) and the time signature is 4/4. The notation includes eighth and sixteenth notes, rests, and repeat signs. Chord symbols are written above the staff: C MIN7, Eb, C MIN7, Ab, Eb, C MIN7, Eb, Ab, Ab(A009)/Bb.

## (C) CHORUS

Musical notation for the Chorus section, measures 12-19. The key signature is two flats (Bb, Eb) and the time signature is 4/4. The notation includes eighth and sixteenth notes, rests, and repeat signs. Chord symbols are written above the staff: Eb6, Db7sus4, Db, Eb7, Eb6, Db7sus4, Db, Eb7.

## (D) INTERLUDE

Musical notation for the Interlude section, measures 20-23. The key signature is two flats (Bb, Eb) and the time signature is 4/4. The notation includes eighth and sixteenth notes, rests, and repeat signs. Chord symbols are written above the staff: Eb, C MIN7, F MIN7, Ab/Bb, Eb, C MIN7, F MIN7, Ab/Bb.

## (E) CHORUS

Musical notation for the final Chorus section, measures 24-27. The key signature is two flats (Bb, Eb) and the time signature is 4/4. The notation includes eighth and sixteenth notes, rests, and repeat signs. Chord symbols are written above the staff: Eb6, Db7sus4, Db, Eb7.

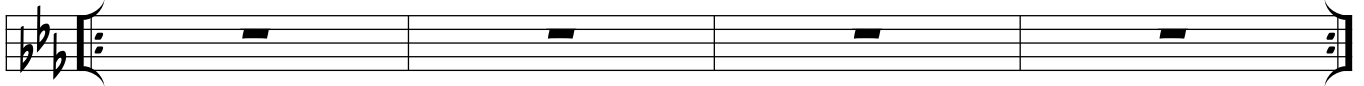


32

**D.S. AL CODA**



**F** VOCAL SOLO      SUNSHINE                      MOONLIGHT                      GOOD TIMES                      BOOGIEEEEE



36

**G** CHORUS VAMP      Eb6                      Db7sus4                      Db                      Eb7



40

**VAMP & FADE**